

MEET THE BRUTUS

The Brutus is designed for versatility. Featuring an ultra small footprint and the ability to be mounted with wheels for mobility, both the 6-inch and 8-inch plate models are ideal for smaller food production grinds and sample runs.



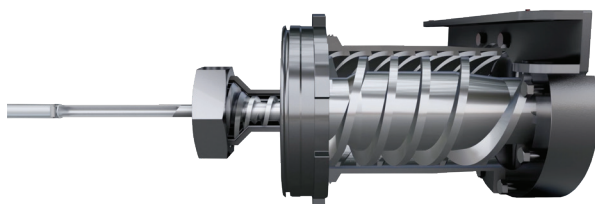
Shown: Brutus 6

BRUTUS 6, BRUTUS 8, BRUTUS 8 AG, BRUTUS 8 SFG, BRUTUS 8 MG

Small, but mighty, the Brutus can handle an initial grind rate of up to 40,000 pounds per hour. Equipped with a 6-inch plate and a 25 horsepower motor or built to accommodate the larger 8-inch plate and a 50 horsepower motor, the Brutus gives industrial food producers the option to add an agitating hopper or a mixer grinder orientation.

OPTIMIZE THE BRUTUS 8 WITH OUR ROME RECLAIM SYSTEM (RRS)

Add the industry's most cost-effective bone collection and reclaim solution to the Brutus 8 in just ten minutes. Its intuitive setup ensures quick sanitation and no extra power sources, helping you manage waste and boost your bottom line confidently.



THE BEST GRINDER FOR YOU **STARTS WITH YOUR NEEDS**

| Grinder | Grinder Type | Plate Diameter | Initial Grind Rate | Final Grind Rate | Voltage | Horsepower | DPA | TPA |
|---------------------|------------------------|----------------|----------------------|------------------------|-------------------|-------------|-----|-----|
| BRUTUS 6 | Stand Alone | 6" | Up to 6,000 lbs/hr | Up to 2700 lbs/hr | 208/240 480V 3 PH | Up to 25hp | Y | N |
| BRUTUS 8 | Stand Alone | 8" | Up to 40,000 lbs/hr | Up to 12,000 lbs/hr | 208/240 480V 3 PH | Up to 50hp | Y | N |
| BRUTUS 8 AG | Agitating Hopper | 8" | Up to 40,000 lbs/hr | Up to 12,000 lbs/hr | 208/240 480V 3 PH | Up to 50hp | Y | N |
| BRUTUS 8SFG | Self Feeding | 8" | Up to 40,000 lbs/hr | Up to 12,000 lbs/hr | 208/240 480V 3 PH | Up to 50hp | Y | N |
| BRUTUS 8 MG | Mixer Grinder | 8" | Up to 40,000 lbs/hr | Up to 12,000 lbs/hr | 208/240 480V 3 PH | Up to 50hp | Y | N |
| TITAN 1107 | Stand Alone | 11" | Up to 50,000 lbs/hr | Up to 14,000 lbs/hr | 208/240 480V 3 PH | Up to 75hp | Y | Y |
| TITAN 1109 | Stand Alone | 11" | Up to 65,000 lbs/hr | Up to 18,000 lbs/hr | 208/240 480V 3 PH | Up to 100hp | Y | Y |
| TITAN 1109 AG | Agitating Hopper | 11" | Up to 65,000 lbs/hr | Up to 18,000 lbs/hr | 208/240 480V 3 PH | Up to 100hp | Y | Y |
| TITAN 1109 SFG | Self Feeding | 11" | Up to 65,000 lbs/hr | Up to 18,000 lbs/hr | 208/240 480V 3 PH | Up to 100hp | Y | Y |
| TITAN 1109 MG | Mixer Grinder | 11" | Up to 65,000 lbs/hr | Up to 18,000 lbs/hr | 208/240 480V 3 PH | Up to 100hp | Y | Y |
| TITAN 1110 | Stand Alone | 11" | Up to 75,000 lbs/hr | Up to 28,000 lb per hr | 208/240 480V 3 PH | Up to 100hp | Y | Y |
| TITAN 1200 | Stand Alone | 12" | Up to 150,000 lb/hr | N/A | 208/240 480V 3 PH | Up to 100hp | N | N |
| TITAN 1600 | Stand Alone | 16" | Up to 100,000lb/hr | Up to 48,000 lbs/hr | 208/240 480V 3 PH | Up to 125hp | N | N |
| TITAN 1600 AG | Agitating Hopper | 16" | N/A | Up to 48,000 lbs/hr | 208/240 480V 3 PH | Up to 125hp | N | N |
| TITAN 1600 SFG | Self Feeding | 16" | Up to 100,000 lbs/hr | Up to 48,000 lbs/hr | 208/240 480V 3 PH | Up to 125hp | N | N |
| TITAN 1600 MG | Mixer Grinder | 16" | NA | Up to 48,000 lbs/hr | 208/240 480V 3 PH | Up to 125hp | N | N |
| MAXIMUS 1109 BG | Bone Grinder | 11" | Up to 17,000 lbs/hr | N/A | 208/240 480V 3 PH | Up to 100hp | N | N |
| MAXIMUS 1109 FBG | Frozen Block Grinder | 11" | Up to 12,000 lbs/hr | N/A | 208/240 480V 3 PH | Up to 100hp | Y | N |
| MAXIMUS 1109 FBG HD | Frozen Block Grinder | 11" | Up to 12,000 lbs/hr | N/A | 208/240 480V 3 PH | Up to 125hp | N | N |
| MAXIMUS 1675 | Fresh/ Tempered Frozen | 16" | Up to 65,000 lbs/hr | Up to 42,000 lbs/hr | 208/240 480V 3 PH | Up to 100 | N | N |
| MAXIMUS 1612 FBG | Frozen Block Grinder | 16" | Up to 18,000 lbs/hr | N/A | 208/240 480V 3 PH | Up to 150hp | N | N |
| MAXIMUS 1612 BG | Bone Grinder | 16" | Up to 25,000 lbs/hr | N/A | 208/240 480V 3 PH | Up to 150hp | N | N |
| MAXIMUS 1666F | Bone Grinder | 16" | Up to 22,000 lbs/hr | N/A | 208/240 480V 3 PH | Up to 125hp | N | N |

Initial grind rates are figured using 3/4" hole plates or larger. Final grind rates are figured using 1/8" hole or larger. Frozen Block rates are figured using a 1" hole plate or larger. Bone Grinder rates are figured using 5/8" hole plate or larger